

WSLR-LP96.5FM Soundwaves



THE CLIMATE IS CHANGING

BY: DAVID BEATON

As we approach summer, the time when dandelions sprout up, we sense movement, convergence happening, and unity building. People overwhelmingly know the planet is warming and are aware we need to take steps to be ready for the changes ahead. The feeling grows that we need each other in this unwritten future even if our politicians are bought off, our corporations are unrestrained, and growth is still considered good. We realize small has always been beautiful.

Are we seeing a convergence of issues in this world? a convergence of movements? multi-nodal? non-hierarchical? horizontally-structured and self-organizing emergent movements? Coalitions, collaborations, bottom up, organic, and diverse ...

TV viewership is down, organic produce is up, fracking is challenged, local food is desired, slow money invested, and indie media heard and made!

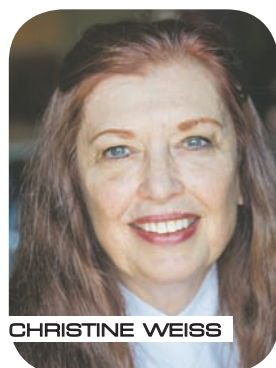
Locally we see tiny houses taking hold, solar power on more roofs (WSLR included), and bicycles going head to head with cars.

People rising. Not in the conventional ways but sprouting up in unforeseen locations. The **Peace Center** builds a tiny house for homeless folks to use as their art studio. **WSLR** commits to more solar on the roof on the station. New College students hold a critical mass bike rally down US41

and an open mic at Payne Park. Local groups form to take on issues: fracking in Florida (*Food and Water Watch*), ethics in local government (*Sarasota Integrity 2015*), and protecting mangroves and the bay (*Suncoast Water Keepers*). Groups are talking about co-op housing, food co-ops, car sharing, and many other ways that we can live cooperatively on this planet. Folks are questioning and standing up to the continual

growth model. Should we be throwing millions into bayfront developments as the water rises or invest in our affordable neighborhoods? Can we get the Sarasota City Commission to take a stand against fracking and also declare that corporations are not people? Can we get the county board to stand with the people and not the developers that funded their campaigns?

CONTINUED ON PAGE 2



CHRISTINE WEISS

Meet

CHRISTINE WEISS WSLR Office Administrator

Christine is an important component of the administrative staff here at **WSLR/Fogartyville**. Working daily with station manager **Dave Beaton**, she sees her responsibility as freeing up the manager's time and assisting him in being more productive. Her work is enormously important.

Born & raised in Cheektowaga, a suburb of Buffalo, N.Y. The name comes from the Seneca tribe meaning "Land of the Crabapples." She eventually moved to Rochester where she worked for many years. However, like so many of us, she found Sarasota and settled here with her partner, **Kent Canterbury**, who introduced her to **WSLR** and community radio.

Christine describes her work here at **WSLR** as stimulating and exciting. Never having had radio station experience before, "it was a new experience, a totally new world." Her involvement in community radio has broadened her experience and world of interests. Besides administrative responsibilities, she now assists in creating some of

BY: FRANCIS SCHEUER

WSLR'S electronic media: public service and upcoming show announcements. Who knows to where this will lead?

Some of Christine's views: "I feel very fortunate (to work here). I've never had so much fun. I look forward to going to work. I like being of benefit to people; It is stimulating and exciting working here." Christine is also a well-experienced healer having practiced reiki for nearly 20 years and benefited many people. She is definitely a socially positive person and a joy to have here at **WSLR**.

Chris' position is funded through the **AARP Senior Community Service Employment Program**. For more information on this program go to aarp.org/aarp-foundation/our-work/income/scsep/



WSLR partnered with **Ben & Jerry's** again for this year's **Free Cone Day** on Tuesday, April 14th. Over 5000 cones were given away and **WSLR** raised over \$1500. **Thanks to Rick Almarode**, owner of the local **Ben & Jerry's** franchise for his long-term support of **WSLR**. Thanks to musicians **David Smash**, **Michael Miller** and **De Mush Doctor & family** for providing music for the day. **Ben & Jerry's** awareness campaign this year focused on their support for mandatory labelling of *Genetically Modified Organisms*. All **Ben & Jerry's** products are **GMO-free as of 2014!**

photos by: Rick Almarode, Michael Miller & Rob Dempsey

wslr-lp96.5fm
Chair's Corner
PLAY IT AGAIN & AGAIN
NOW IN STEREO

TOM WALKER



Did you miss your favorite show? No worries! Just go to our new web page archive.wslr.org, choose your show, and hear it from our archives. Music shows are kept for two weeks, the legal maximum, and talk shows are kept indefinitely.

Also, the button **"Play On Air Now"** in the upper left of that page is a higher quality stream than the one you currently get from the button on our home page.

And we're now broadcasting in stereo. You should be able to hear the difference. Let us know how you like all of this!

We're improving reach as well as sound quality. In the next few weeks, the **Peace Education and Action Center**, our fellow nonprofit at 525 Kumquat Court, will be testing their Bradenton antenna in connection with their new low power license **WBPV- West Bradenton People's Voice- at 100.1 FM**. Soon they'll

carry our **WSLR** signal twelve hours a day. Listeners in west Bradenton and parts of Longboat Key should be **able to hear us for the first time!**

How do we pay for all of this? Our twice-yearly membership drive started on April 16 and ran through April 22. Our station is run by **people power** - both volunteers and donors!

Speaking of generosity let me give a **big THANK YOU**, not only to our many donors and listeners, but especially the foundations who have donated to **WSLR**: the **estate of Christopher Berliner**, the **Joseph and Sylvia Bloom Foundation**, the **Knox Family Foundation**, and the **Scheidel Family Foundation**. What great partners!

By the way, to find out a lot more about **WSLR**, its history and its finances, and to see a short video about our station, just go to thegivingpartner.guidestar.org, search for **WSLR**, the video is there.

See you at our next **third Monday** Board Meetings, 7pm at the station.

CONTINUED FROM PAGE 1, CLIMATE ARTICLE

Whatever the answers, folks are moving ahead on their own in their lives and businesses. How long have we known styrofoam is bad and bicycling is good, that dark chocolate is good and that a heavy meat diet is bad, that local radio by volunteers is superior to corporate programmed stations?

The **Peace Center's WBPV 100.1** Low Power FM station will launch this summer with the help of **Aces Lounge** in Bradenton, and **Chris Rouse** and **Arlene Sweeting**. It is not only the airport that brings our two communities together but now community radio. Folks in Bradenton you will be able to hear many of the **WSLR** shows you love being simulcast.

In the coming year, we are planning some live broadcasts from Fogartyville but that does not mean we do not want to see your face at our shows. Community is still best done best face

to face as Fuzzy, Lou, or Lisa can attest (all benefit pass holders).

Can we rise to the challenges ahead? We have no choice. There is no turning back. We share music, we share food and we share the future. Collectively, we as people are diverse and that is what makes us strong but working and playing together for change makes the bond stronger. A smile on a face can never be replaced by some icon from our smart phones. We will smile together for that is **Why Sarasota Loves Radio**.

Be the seed of the dandelion and spread the message of change. Hold firm to the ground and blossom with straight talk and a strong stalk. Shine brightly facing the sun out of the darkness.

WSLR Board of Directors

Tom Walker, Chair
Michele Demperio, Vice Chair
Julie Morris, Treasurer
Zane Plattor, NCF Representative
Rocky Cartaya, STAR Representative

Jason Boehk
Pam Marwede
Wayne Genthner
Gina Tebrugge
Alecia Harper

David Beaton, Station Manager

Office: 941-894-6469 • Studio: 941-954-8636
www.wslr.org • email: info@wslr.org

Address all correspondence to:
WSLR, P.O. Box 2540, Sarasota, FL 34230

WSLR-LPFM 96.5 is a section 501(c)3 charitable organization.

Newsletter layout & design donated in-part by lumpypixels.com design division

WSLR MISSION STATEMENT

WSLR is an innovative, listener-supported, nonprofit, non-commercial FM radio station dedicated to serving the Sarasota community. **WSLR** features locally-produced programming and events that feature cultural, artistic and political perspectives currently underrepresented in the media.

Our goal is to inform and empower listeners to play an active role in **WSLR** and in their community.

WSLR promotes equality, peace, sustainability, democracy, health and social & economic justice.

WSLR IS NOW ARCHIVING SHOWS!

Here's your chance to listen to **EVERYTHING** **WSLR** offers! Music shows will be available for two weeks and talk shows, **forever**. We have also gone **STEREO!**

YEAH! WE'RE MOVIN' ON UP!

ARCHIVE.WSLR.ORG



SHOW YOUR SUPPORT FOR WSLR WITH OUR NEW T-SHIRT

Available in all sizes online at WSLR.org, at all **WSLR** events and wherever we are tabling, including the Lemon Ave Farmer's Mkt.

WWW.LUMPYPixels.COM

DESIGN • ILLUSTRATION • GRAPHICS

LET'S TALK ABOUT YOUR NEXT PROJECT. gnu-biz@lumpypixels.com

FOR MUSIC, HEALTH & A BETTER LIFE IN SRQ.

Annie Murphy, affectionately known as **YOGANNIE**, has been connected to community radio since the mid 1990s. Since that time she has followed **WMNF** (Tampa), **Fogartyville Media & Arts Center** in its original Bradenton location, and has been with **WSLR** (Sarasota) since its early days.

Annie was born in Corpus Christi, Texas. Her family moved around the southeastern U.S. because her father worked professionally in the petrochemical industry. She attended college in Texas, worked there, and spread her wings for other opportunities. She spent several years in Atlanta,



GA before deciding on our fair Sarasota. Along the way Annie found a passion for massage and yoga (yogannie.com), took advanced studies, and is now teaching classes as well as providing regular state requirement training.

Here at **WSLR** Annie has provided administrative assistance to our former station manager (**Arlene Sweeting**) and is now assisting our present station manager, **Dave Beaton**.



ANNIE MURPHY

She has also found a niche substitute hosting the very popular show **FROM THE MOUNTAINS & BEYOND** while its originator, **Tracy Hostetler**, is on leave. Annie loves music creation and performs with the popular

three part harmony folk group **HOT POCKETS**, along with **Mindy Simmons** and **Lisa Bohn**.

Annie is one of those community-minded souls, who dedicates her efforts to improving where she lives and contributing to those passions she is drawn to. We are very happy to have her as a valuable member of **WSLR, Sarasota's community radio—a family**.

***From the Mountains
& Beyond***
Mondays 4-6pm

DAVE WERTMAN CELEBRATE THE TOP OF YOUR SATURDAY MORNIN' WITH CELTIC DEW

Plus: Elizabeth's Corner



DAVE WERTMAN

Arich Celtic family & social background, small-town community life under-lies the strength, vigor and vitality of Wertman's Saturday morning show, **CELTIC DEW**.

Dave was born and raised in Lockport, a small yet culturally strong town in N.W. New York State. Irish and Scottish culture was right there in his home, in his school, in the church, and in his community. A parish priest was even part of the family. Lockport began about 1816 after N.Y. State authorized the building of the historic Erie Canal through uninhabited territory. Many Irish and Scottish laborers were imported, bringing their families, culture, and canal-building experience gained in England. That trend is still alive and well in Lockport, a city of nearly 22,000 souls.

Mindful of community reality, Dave went off to study at university taking degrees in public administration. After graduation, he devoted

his life to public health, administrating large programs in the northeast. Along the way he met and married **Kathy**, who has contributed to creating a strong family relationship. Together they have four successful children.

Over the years they have amassed more than 10,000 pieces of mostly Celtic music and traveled extensively in the U.S., the Maritime Provinces of eastern Canada, and the British Isles. While in

Canada, they found many communities of Celtic culture, and in some more isolated hardly a change, since their ancestors emigrated generations earlier. Dave said that he and Kathy were always welcome even though often they could not speak or understand a word of the dialect.

The **CELTIC DEW** show originates from a chance meeting with **WSLR** volunteers at **Sarasota's Farmers Market**. After

basic programmer training, Dave settled into the 7 to 9 a.m. slot on Saturday mornings, and has built his show into an international success. Over the years he has hosted many fine artists of voice and instrument. Just imagine hearing live **BAGPIPES** wakening you on a Saturday morning; that would warm your blood and improve your hot coffee. Dave weaves a variety of stories



and music, which is the way of his family and ancestors. Storytelling is music and music is storytelling.

Dave Wertman's show reaches far and wide in SRQ, other parts of the USA, Canada, and the British Isles, attracting numerous loyal listeners. Dave is a storyteller and likes to relate how one Saturday he received a phone call from some Irish folks in their local pub. They had been listening to his show on line and decided to call the WSLR studio. Now that is memorable.

ELIZABETH'S CORNER: each show, after a little warm up, Dave dedicates some time to his **Gamma Elizabeth**, who holds a special place in his heart. As an older woman, she both remembered and played some of the important music and lead family singing which greatly influenced his music passion. Listen to that segment and you will be hooked on family values and this show.

There is much more to say about this fine show that illustrates its depth, breadth and qualities but it is best for you to tune in. So pour your morning coffee, listen in and you will be set up for a fine Saturday.

Celtic Dew
Saturdays 7-9am

**WE WANT YOUR
RECORDS/CDS**

(only if in GREAT condition, please!!)

**Help support WSLR
by donating your used records
and cds today!! Thanks!!**

WSLR EVENTS LIVE AT FOGARTYVILLE

Tickets are available
at www.wslr.org



SUNDAY, MAY 3, 7PM \$10 ADV/ \$12 DOOR

La Lucha

w/ Jun Bustamante, singing

This Tampa Bay based trio +1, consists of three best friends from three different parts of the world: Colombia, Mexico & U.S.. A diverse mixture of Jazz standards, Latin-inspired rhythms and originals. Each member of the trio has extensive national/international performance experience, including a tour of Italy & France with performances at the "Umbria Jazz Festival" and "Jazz a Juan" in Juan Les Pins. Their aim to create music that transcends genres or classifications. St. Pete scene-maker, activist and artist **Jun Bustamante** offers her powerful yet soulful, high-jazz voice for an unforgettable evening.



Unless otherwise stated, ALL shows are at the west entrance of
**Fogartyville Community Media
& Arts Center, 525 Kumquat Court**

Scan QR code
with your smart
device to purchase
advance tickets.

FRIDAY, MAY 15, 8PM \$12/\$15 DOOR

Kevin So

with pedal steel great Buck Reid

Making a name for himself as a boundary-stretching singer/songwriter, So's original blend of pop, r&b, and hip hop has garnered the attention and praise from Billy Bragg, Martin Sexton, Mary Lou Lord, Richie Havens, David Wilcox, and most recently Keb Mo. The Boston Globe described So as "Riveting...impeccable."



SATURDAY, MAY 23, 8PM *\$25/\$30 DOOR

Chris Thomas King

*WSLR Benefit Pass
is not valid for this show.

Initially known for his audacious fusion of blues and hip hop, **Chris Thomas King** reached a whole new audience with the **Coen Brothers** film *O Brother, Where Art Thou?*, not only appearing on the award-winning soundtrack but playing a prominent supporting character as well. King also recorded the Grammy winning score of *Ray* with **Ray Charles** and acted in the Oscar winning film with **Jamie Foxx**. He is a multi-Grammy Award winning artist and the best-selling blues artist of the 21st Century.



FRIDAY, MAY 8, 8PM \$12/\$15 DOOR

WAHH!

World Fusion Band

A spectacular blend of "East meets West" in true Fusion Music style. Trailblazers of a unique and multiform sound, WAHH! features **Shankh Lahiri** on tablas, vocals, harmonium and percussion; **Peter Mongaya**, guitar; **Ray Villadonga** (WMNF host of *Step Outside*), bass; **Michael Washing-**

ton, drums & percussion; and **Rajib Karmakar**, sitar; they are rooted in India's rich traditional musical culture enveloped in an artful weave of Jazz, Prog-Rock & Funk.

SATURDAY, MAY 9, 8PM \$10/\$15 DOOR

Luca Sestak:

Blues & Boogie Woogie Piano

David Smash opens the show

Born on January 10, 1995 in Celle, Germany, Luca is a classically trained pianist. At the age of 7 he discovered Jazz, Blues & Boogie Woogie. At eleven ('06) he became *YouTube* sensation, recorded his first CD at 15, "Lost in Boogie." Luca is touring in support of his second release *NEW WAY*.

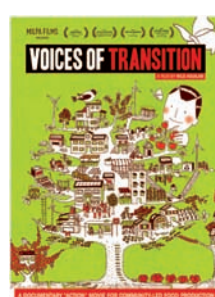
Lithuanian immigrant **David Smash** is a world acclaimed multi-instrumentalist who was featured on *Lithuania's Got Talent* and is currently a WSLR programmer.



SUNDAY, MAY 10, 7PM \$12/\$15 DOOR

Sarah Lee Guthrie & Johnny Irion

The granddaughter of **Woody Guthrie** and the grand-nephew of author **John Steinbeck** have been married since 1999, Guthrie and Irion have released five albums together, including this year's *Wassaic Way*. The duo recorded its latest LP with help from **Wilco's Jeff Tweedy** and **Pat Sansone** in the band's loft.



THURSDAY, MAY 28 POTLUCK @ 6PM; FILM @ 7PM

Films for a Future: Voices of Transition

By focusing on immediate profit and ignoring millennia of experience in agronomy, agroindustry is responsible for the unprecedented erosion of soils now occurring around the world. Add climate change and dwindling natural resources to the picture, and it would appear that even societies in the Global North are no longer safe from famines. *Voices of Transition* is a film which is optimistic but clear-sighted. It makes clear that these current and impending crises are, in fact, positive challenges!

WEDNESDAY, JULY 15, 7PM \$12/\$15 DOOR

Bradford Lee Folk & the Bluegrass Playboys

Nashville's good-times bluegrass that's not afraid to punch you in the gut. If you want to reach Bradford, call him after 2:00 p.m., Nashville TN time. In the a.m. he is out on his tractor, in the fields of his organic farm, farming for a living. After 2:00 p.m, Brad heads back into the city to set up for a long night of burning bluegrass and rootsy Americana with his band **The Bluegrass Playboys**. That juxtaposition between the gritty dirt of the country and the glitz of Nashville lies at the heart of Bradford Lee Folk's music.



We have an app! Search your respective app store for WSLR

REFUNK YOUR JUNK!

Rethink what we throw away: 1404 Central Ave
Recycle/Upcycle/Reuse. Believe in
SRQ 34236
the power of recycling, repurposing,
941) 953-5100
reusing and reinventing. We are an
establishment for innovation and a
place to come refunk-your-junk!

Hours:
Wednesday - Friday
9 am - 5 pm
Saturday
9 am - 4 pm
Closed: Sunday,
Monday & Tuesday



Used Stuff Inc. is your source
for reclaimed building materials,
vintage décor, house salvage services,
D.I.Y. inspiration and much more!

**green
BUSINESS**
PARTNERSHIP
In association with Sarasota County



Nearshore, Bay, and Offshore
Charter Services

Captain Wayne Genthner

Phone: 941 720 4418

Serving Anna Maria, Longboat Key, Lido Key, and Siesta Key

Grouper • Snapper • Amberjack • Kingfish • Cobia

www.wolfmouthcharters.com

	MONDAY	TUESDAY	WEDNESDAY	THURSDAY	FRIDAY	SATURDAY	SUNDAY	
12m	Global Village Syndicated	Beats, Rhymes & Life Radio DJ Cellus	Lumptytunes! <i>Definitely Difficult Listening</i> The Head Lump	The Shizzle Show Dee Rivera, K-SO, D-Shizzle	rebroadcast Complex Waveforms Mark Zampella	Open A.I.R. Matt Dakan		12m
1a							New Radio New College Zane Plattor	1a
2a	Gary Null Syndicated	Blues Station Syndicated	Strange Currency Syndicated	Upfront Soul Syndicated	Trance on the Porch Syndicated	MUSIC automated playlist		2a
3a		Union Edge Syndicated	Truthdig Radio Syndicated	A Way With Words Syndicated	Economic Update Syndicated			3a
4a	Thom Hartman Show Syndicated							4a
5a		Thom Hartman Show Syndicated	Thom Hartman Show Syndicated	Thom Hartman Show Syndicated	Thom Hartman Show Syndicated	FM in The A.M. Mr. Bill	MUSIC automated playlist	5a
6a								6a
7a								7a
8a	Hollerin' & Wallerin' Jethro	Soul School Troy Nichols	Hot Tea Bryan Osgood -opposite weeks- Music with a Purpose Pat Monahan	Eclectic Blender Dave Pedersen	The Breakfast Bar William Stoner	Celtic Dew Dave Wertman	A Love Supreme John Haupt	8a
9a							Wings of the Heart Salima Rael & Carol Rosenbaum	9a
10a	No Nonsense Nutrition Eve Plews	Peace & Justice Report alt Florida Caribe Johannes Werner	Stratosphere SRQ alt Theater Talk Sea Change Radio	Renaissance SRQ Steve McAllister	Surreal News Lew Lonini & Steve Norris	Ralph Nader Radio Syndicated	Alternative Radio Syndicated	10a
11a	Music of the World Marco Ciceron	AfroCuban Jazz Edition Frankie Piniero -opposite weeks- Global Connections DJ Moshi Moshi	Vibrational Journeys Perette Cannady	The Global Groove Pam Marwede	Complex Waveforms Mark Zampella	On The Red Couch Talk Nation	Law and Disorder Syndicated	11a
12n						Saturday Morning Cartoon Show Josh Rabow		12n
1p	All Things Rock Gary O.	Digital Themes Michael Stultz -opposite weeks- Back Alley Blues Steve Arvey & Jane O'Brian	Grand Ole Opry Dr. Nik	Folk Alley Syndicated -opposite weeks- Play it again Marshinvitz David Smash	Positive Friction John Haupt	Juke in the Back Syndicated	Sunday Morning Folk James Hawkins & Ishmael Katz	1p
2p						De Mush Doctor's Caribbean Rhythms De Mush Doctor	Memories of Days Gone By Frankie Mopar Danny C	2p
3p	Democracy Now! Syndicated	Democracy Now! Syndicated	Democracy Now! Syndicated	Democracy Now! Syndicated	Democracy Now! Syndicated			3p
4p	The Monitor Syndicated	Occupy Radio Syndicated	Ralph Nader Radio Syndicated	Richard Wolf's Economic Update Syndicated	Thom Hartman Brunch w/Bernie Syndicated			4p
5p	From the Mountains & Beyond Tracy Hostetler, Annie Murphy, Rob Demperio & RadioFree Carmela	HotRodRock Road Dog Russ, Sven & Stella	Upfront Soul Syndicated -opposite weeks- Hawaii Bob & Co. Theme Show	Ted's Head Ted	Friday Happy Hour Bartender Tommy D.	Bop & Beyond Bill Ewell	Dadee-o's Collector Corner Daddee-o	5p
6p	Capitol Update State News	Maternally Yours Laura Gilkey, Ryan Stanley, Dana King	Jumping Mullet Local News	Guns & Butter or Letters To Washington	Jumping Mullet Local News	All Mixed Up Syndicated	Blues with the Velvet Hammer Beth "The Velvet" Hammer	6p
7p	Sierra Club Radio		TUC Radio		Counter Spin			7p
8p	Yesterday's Dead Today Mark Binder	Lost in the Roots Cellar Billy Wetherington -opposite weeks- Aerial Boundaries Rich LaPenna	New & Blue Session Gary Inganamort	Adventures in Jazzland Mike Finly	Ripper's Rarities Russ Yodice	Global Village Syndicated	Louisiana Gumbo John Osgood	8p
9p								9p
10p	Americana Rock Soundoff! Von Cloedt	Alternative Reality Alex & Stéph	Second Wind Sean Green -opposite weeks- Stone Age Syndicated	Indie Files Joel Jaffe -opposite weeks- Spirit of Punk Jill Hoffman-Kowal	Sound Apothecary Mercedes -opposite weeks- Dirty Ice Cream Truck Luke Rosebaro	INI Radio Halle Burke	Common Threads Fred Nowicki	10p
11p	Beats, Rhymes & Life Radio DJ Cellus	Lumptytunes! <i>Definitely Difficult Listening</i> The Head Lump	Rayo Radio Ryan Larranaga - opposite weeks - see Thurs 12AM	rebroadcast Complex Waveforms Mark Zampella	Open A.I.R. Matt Dakan	New Radio New College Zane Plattor	Global Village Syndicated	11p

Streaming Live 24/7/365 at www.WSLR.org · Studio Line 941-954-8636

WSLR 96.5lpfm

WEEKLY PROGRAMMING SCHEDULE

WHERE TO FIND IT

AMERICANA/FOLK/CAJUN ACOUSTIC/BUEGRASS

Aerial Boundaries))))))) altTues 7-9p
Americana Rock Soundoff!)) Mon 9-11p
Folk Alley))))))) altThurs 12n-2p
From the Mountains & Beyond)) Mon 4-6p
Grand Ole Opry))))))) Wed 12n-2p
Hayride))))))) Sat 7-9p
Hollerin' & Wallerin'))))))) Mon 7-9a
Louisiana Gumbo(Cajun))))))) Sun: 7-9p
New & Blue Session))))))) Wed 7-9p
Positive Friction))))))) Fri 12n-2p
Sunday Morning Folk))))))) Sun 11a-1p

BLUES/ROOTS/R&B/SOUL

w/the Velvet Hammer))))))) Sun 5-7p
Back Alley Blues))))))) altTue 12n-2p
The Blues Station))))))) Tue 1-3a
Juke in the Back))))))) Sat 12n-1p
Lost in the Roots Cellar))))))) altTue 7-9p
Soul School))))))) Tues 7-9a
Upfront Soul)) altWeds 4-6p Thurs 1-3a

ELECTRONICA/DUBSTEP/ CLUB/HIP HOP

Beats, Rhymes & Life Radio)) Mon 11p-1a
Dirty Ice Cream Truck)))) altFri 9-11p
Open A.I.R.))))))) Fri 11p-1a
Rayo Radio)))) altWed 11p-1a
The Shizzle Show)))) altWed 11p-1a
Trance on the Porch)))) Fri 1-3a

FREEFORM/ELECTIC

All Mixed Up))))))) Sat 5p-7p
Alternative Reality))))))) Tues 9-11p
The Breakfast Bar))))))) Fri 7-9a
Common Threads))))))) Sun 9-11p
Complex Waveforms)))) Fri 10a-12n
Rebroadcast)))) Thurs 11p-1a
Digital Themes)))) altTue 12-2p
Eclectic Blender)))) Thurs 7-9a
FM in the AM (request-driven)))) Sat 3-7a
Friday Happy Hour)))) Fri 4-6p
Hawaii Bob & Co.Theme Show)) altWeds 4-6p
Hot Tea)))) altWed 7-9a
Lumptytunes!(experimental))) Tues 11p-1a
Music with a Purpose)) altWed 7-9a
New Radio New College)))) Sat 11p-1a
Nightfly)))) Thurs 1a-3a
Saturday AM Cartoon Show)))) Sat 11a-12n
Strange Currency)))) Wed 1-3a

JAM/ROCK/PUNK/METAL

All Things Rock))))))) Mon 12n-2p
Country Fried Rock)))) altWed 7-9a
Hot Rod Rock(Rockabilly))))) Tues 4-6p
Indie Files)))) altThurs 9-11p
Ripper's Rarities)))) Fri 7-9p
Second Wind)))) altWed 9-11p
Sound Apothecary)))) altFri 9-11p
The Spirit of Punk)))) altThurs 9-11p
Stone Age)))) altWed 9-11p
Ted's Head)))) Thurs 4-6p
Yesterday's Dead Today)))) Mon 7-9p

JAZZ

Adventures in Jazzland)))) Thurs 7-9p
Afro-Cuban Jazz Edition)) altTue 10a-12n
Bop & Beyond)))) Sat 5-7p
Dadee-o's Collectors Corner)))) Sun 1-3p

NEWS

Capitol Update)))) Mon 6-6:30p
Democracy Now)))) M-F 2-3p
The Jumping Mullet ReportW, F 6-6:30p

OLDIES

Dadee-o's Collectors Corner)))) Sun 1-3p
Juke in the Back)))) Sat 12n-1p
Memories of Days Gone By)))) Sun 5-7p

SPIRITUAL

A Love Supreme)))) Sun 7-8a
Wings of the Heart)))) Sun 8-9a

TALK

A Way With Words)))) Thurs 3-4a
Economic Update)))) Fri 3-4a
Florida-Caribe)))) altTues 9-10a
Gary Null)))) Mon 1-2a
Guns & Butter or Letters to Washington)) Th 6-7p
Law and Disorder)))) Sun 10-11a
Maternally Yours)))) Tues 6-7p
The Monitor)))) Mon 3-4p
No Nonsense Nutrition)))) Mon 9-10a
Occupy Radio)))) Tues 3-4p
On the Red Couch)))) Sat 10-10:30a
Peace & Justice Report)) altTues 9-10a
Peace Corps Stories)))) Mon 6:25a
Renaissance SRQ)))) Thur 9-10a
Ralph Nader Radio Hour)))) Sat 9a
Sea Change Radio)))) Wed 9:30a
Sierra Club Radio)))) Mon 6:30p
Stratosphere Sarasota altWed 9-9:30a
The Surreal News)))) Fri 9-10a
Talk Nation)))) Sat 10:30-11a
Theater Talk)))) altWed 9-9:30a
Thom Hartmann)))) M-F 4-7a
Truthdig Radio)))) Wed 3-4a
TUC Radio)))) Wed 6:30p
Union Edge)))) Tues 3-4a

WORLD

Afro-Cuban Jazz Edition)) altTue 10a-12n
Celtic Dew)))) Sat 7-9a
Global Connections)) altTue 10a-12n
The Global Groove)))) Thur 10a-12n
Global Village)) Sat 7-9a, Sun 11p-1a
INI Radio (Reggae))))) Sat 9-11p
De Mushdoctor's
Caribbean Rhythms)))) Sat 1-3p
Music of the World)))) Mon 10a-12n
Play It Again Marshinvitz)) altThurs 12n-2p
Vibrational Journeys)))) Wed 10a-12n

ARCHIVE.WSLR.ORG

GET THE WSLR APP ON YOUR SMART DEVICE

& LISTEN TO
WSLR
ANYWHERE
IN THE
UNIVERSE.



SCHEDULE SPOTLIGHT

Americana Rock Soundoff!

Your host Von has his finger on the pulse of Americana.

TUNE IN Mondays 9 to 11pm

ALSO CHECK OUT

Complex Waveforms

Mark Zampella has been with us for the long haul. His show is as progressive as you'll ever hear in daytime programming.

TUNE IN Fridays 10am to 12n

REBROADCAST THURSDAY 11PM

spring/summer | www.wslr.org | page 5

community news

Making Waves

The **WSLR Senior Softball team** finished 3rd in an 8-team league for its inaugural season. The crew of the **96.5 LPFM team** (including **Gary O**, host of *All Things Rock*) played well for most of the season despite injuries to key players. Their bright gold uniforms with dark green caps attracted a lot of attention from fellow players who learned that **WSLR** was a radio station and not a women's organization. The league plays its games at the 17th Street fields, and more than 300 players participate in the various senior leagues which compete there.

Beth, The Velvet Hammer, (Sundays 5-7pm) is getting married to **Michael Dempsey** on **May 12, 2015**. There will be an after-party (not a reception, just an after-party) for friends and well wishers at the *Blue Rooster*.

Congratulations to *Maternally Yours* co-host **Ryan Stanley** (Tues. 6pm) and husband **Damen Shaqiri** on the birth of their second child. **February 7, 2015**, **Arber Ali Shaqiri** was waterborn at home with midwife **Harmony Miller** in attendance.

WSLR would like to give a big shout out to *Maternally Yours* Collective member **Dana King**. With **Laura Gilkey** away to care for her son **Benji**, and **Ryan** on maternity leave, Dana stepped up and took over all aspects of production in + out of the studio. Dana brilliantly enlisted the help of several guest co-hosts and even recruited two new interns. She graciously gave of herself for the common good and it is that type of commitment that best exemplifies the mission of **WSLR**.

Tracy Hostetler, co-host of *From the Mountains and Beyond* (Mondays 4-6pm), and her husband **Greg**, after searching and waiting for over a year, have become parents to a female Blue Merle Australian Shepherd puppy. Her name is **Mandy—Sweet Amanda Lynn**.

Joe Jacco host of, *The Revolution Starts Now*, which used to air on Thurs 7-9pm gives us this update: "I'm still recovering from my bout with tongue cancer but am finally seeing the light at the end of the tunnel, so-to-speak. I still can't eat solid food but my swallowing is improving so I should be able to expand my diet I'm a month or so. I have returned to work for 4 hours a day and pretty much take a nap when I get home. I have made it to several **WSLR** events and hope to pick up the pace soon. Don't know if my voice will ever come back enough to get back on the air but am looking forward to getting more involved in the station on a voluntary basis somewhere down the line, hopefully before I retire for real in January 2017. Then you won't be able to keep me away!"

Board Chair Tom Walker enjoyed being among the performers in *Faces of Change*, a documentary/play reading held at *Asolo* and *Fogartyville* in early March. The reading, created by **Asolo Education & Outreach**, was based on stories of homelessness and activism collected from around our community.



WSLR Ambassador Francis Scheuer begins his second year as **Vice President** of *Kensington Park Civic Assn.* KP is an 1100-home, 3000-resident subdivision in N.E. Sarasota. It is a vibrant and thriving residential area built in the 1960s.

James Hawkins, co-host of the *Sunday Folk Show* (11am-1pm), has a new CD in the works *Tales from Horse and Chaise* is collection of original songs about historical events in the Venice/Sarasota area. Give this CD a listen, share in James' love and appreciation for the place where we live! reverbNation.com/TurnBackTime

DJ Cellus, host of, *Beats, Rhymes and Life Radio* (Mondays 11pm-1am) has been working on a new quarterly Art & Culture Magazine: *Funky Fresh Magazine* is a collaboration between creatives in partnership with **Lena Hart** and her visionary exploration of culture, music, art, and life. Defying boundaries, *Funky Fresh Magazine* will bring forth new ways of thinking by showcasing new concepts, perspectives and talents from both local and global communities. Based in the local Sarasota area, *Funky Fresh* has world wide appeal. FunkyFreshMagazine.com

Mark Zampella *Complex Waveforms* (Fri 10am-12n & Thurs 11pm-1am) has just completed work on a short film that he wrote & directed, entitled *The Half Twin*. Former **WSLR** board member **Ed Ericson** has a starring role as a man suffering from early-onset Alzheimer's who throws his daughter's life into turmoil when he reveals a long forgotten family secret. Architect and Dead Head **Mark Binder** *Yesterday's Dead Today* (Mon 7-9pm) graciously donated a blueprint for props. In the spring of '15 Zampella is off to southeast Asia for 2 weeks, where his wife **Nancy** will lead a yoga retreat on the islands of Bali, Lombok, and Gili Trawangan. Bike-riding down an active volcano, drinking Balinese coffee, and swimming with huge sea turtles is also on the agenda! **Bill Ewell Bop & Beyond** (Saturdays 3-5 pm) and his fiancé **Sarah** are going on the trip to Bali, as well.

Florida-Caribe Host **Johannes Werner** (AltTues 9-10am) has been getting by on about 5 hours of sleep a night since US-Cuba normalization boosted interest and subscription sales of the magazine he founded *Cuba Standard*. cubastandard.com.

Frankie Piniero, host of the *Afro-Cuban Jazz Edition* (altTues 10am-12pm) is through a third surgery. Hoping this will improve his circulation and be able to walk again. At this time, he is working to master the *Viva Cal* at HCC and cut a new album, *Viva Cal Sextet*, *A Tribute to Cal Tjader*, *Good Vibes* in memory of jazz pianist, **Kenny Drew Jr.** He is also working as a scout, booking venues for *Los Rumberos de Cuba 2015 Tour* and *Los Hermanos Arango*.



Congratulations to **Dee Rivera, K-So, and D-Shizzle** of *The Shizzle Show* (Thurs 11pm-1am) for winning the **2015 All Florida Radio Award for BEST HIP HOP SHOW.**



Got an old vehicle to unload?

How about donating it to WSLR?



877-411-3662
centerforcardonations.com/wslr.htm

4TH ANNUAL Monday May 25, 2015 10:30 AM - 7 PM
MYAKKA BLUES FESTIVAL
Tickets: \$15 in adv. and are available at myakkablues.com

TRIBUTE STAGE TO JUNIOR WELLS

Dave "London Boy" Scott

Jody Young

Frank Bang

Tony Smith

Chris Flowers

Sarasota Slim

At the Fabulous

ON THE MAIN STAGE

Bodie Valdez

Back Track Blues Band

Ellie Lee with Blue Fury

Josh Rowand

The Pitbull of Blues

Annika Chambers

In benefit to **LOVELAND CENTER**, a safe place for adults with developmental disabilities.

RAMADA VENICE RESORT MAKE RESERVATIONS BLUEG FESTIVAL

VENICE Gondolier Sun LOCAL NEWS COVER TO COVER • FLORIDA'S NO. 1 WEEKLY NEWSPAPER

SUNCOAST BLUES SOCIETY



LIVE Blues on the Myakka River!

5000
E. Venice Ave.,
Venice, FL 34292

HARVEY MILK FESTIVAL 2015
FILM - ART - MUSIC

SAVE THE DATES!
MAY 14-16

14TH BURNS COURT
15TH THE HUB
16TH FIVE POINTS PARK

WWW.HARVEYMILKFESTIVAL.COM

CRT Center For Religious Tolerance

The Center for Religious Tolerance (CRT) traces its roots to a trip to Israel during the second Palestinian Intifada (uprising). Newspapers were filled with stories of suicide bombings, and the travelers expected to find only hatred and violence. Instead, they met countless individuals of all faiths working to promote harmonious relationships in their communities. It quickly became clear that the peacemakers were isolated from each other, and that they felt ignored by the rest of the world. By the time they returned home, the travelers had decided they had to do something. **CRT** was developed with one major goal in mind: to find, support, and publicize effective interfaith grassroots peace efforts in areas of conflict.



Jewish, Christian, Muslim and Druze men gather in Israel at the **Garden of the Mothers Women's Peacebuilding Center** (supported by CRT)

CRT's international work is based on the belief that people in local communities know best what they need to solve their own problems. **CRT's** role is to support them in getting those needs met. Support might be financial, technical, conceptual, through grant writing, by access to media or policy makers, documentation and evaluation, or networking. But always the goals are set by the change-makers themselves.

CURRENT CRT PROJECTS INCLUDE:



CRT director **Andrea Blanch** (in red) at a **Women's Empowerment project** in the West Bank (supported by CRT)

WOMEN REBORN, a Palestinian women's empowerment project in two villages in Israel. This project has grown from an initial 11 women meeting weekly to more than 2,000 women going back to school, getting jobs, and becoming politically involved.

YOUNG WOMEN'S PARLIAMENT, a project bringing together Israeli Jewish and Arab high school girls to learn about women's rights and the political process. Each group ends the year by visiting the Knesset, talking with members, and introducing a bill. The project began in two Arab and two Jewish communities. A grant from **USAID** was recently ap-

proved that will expand the project to twenty additional Arab and Jewish communities.

OBIGIMA, a project aimed at eliminating violence against women and girls in a rural area in Kenya. The project currently involves more than 100 women who meet weekly for mutual support, trauma healing, and strategy development. Obigima has enlisted the support of local (male) tribal and religious leaders, who have pledged to help stop all forms of violence against women, including sexual assault, domestic violence, and female genital cutting.

ALTERNATIVES TO VIOLENCE workshops in Honduras help indigenous women in the mountains of the Locomapa region better understand the roots of violence, practice skills of nonviolence, and work collectively to combat social and economic injustice.

CRT also works here at home. At the national level, **CRT** is an active member of the Alliance for Middle East Peace, which is promoting the establishment of an international fund to support expansion of grassroots peace efforts in Israel and Palestine. Here in Sarasota, **CRT** recently co-sponsored a series of films and discussions about Israel and Palestine at **Fogartyville CM&AC** (along with the **Women's Interfaith Network**, **PEAC**, **Venice Interfaith Community Association**, and the **ANSWER Coalition**) The five-part series was very well attended, and generated honest and open discussion about the situation and potential solutions. At the final session, participants expressed their desire for an ongoing opportunity to become more involved. www.c-r-t.org or email akblanch@aol.com



BECOME A MEMBER of SARASOTA'S COMMUNITY RADIO STATION



() I WANT TO VOLUNTEER!

Name _____

Address _____

City _____ State _____ Zip _____

Phone _____ E-Mail _____

CHOOSE A MEMBERSHIP LEVEL

- | | |
|--|--|
| <input type="checkbox"/> \$10 Student/Low Income | <input type="checkbox"/> \$365 Everyday Hero |
| <input type="checkbox"/> \$30 Individual | <input type="checkbox"/> \$1,000 — 100 Watt Club |
| <input type="checkbox"/> \$96.50 RadioActivist | <input type="checkbox"/> Other \$ _____ |

- Receive WSLR's quarterly newsletter, Soundwaves
- Influence the music & public affairs you hear on the radio
- Become a programmer or volunteer reporter
- Support independent media in your community

WSLR mailing address : P.O. Box 2540 Sarasota, FL 34230

941-894-6469 (office) · **941-954-8636** (studio) ·

www.WSLR.org

WSLR-LPFM 96.5 is a section 501(c)3 charitable organization. Contributions are tax-deductible.



SUNDAY, AUGUST 2, 4-9PM STILL ONLY \$10

WSLR's 7TH ANNUAL

VERY MERRY JERRY DAY

It's going to be a 'Sunshine Day-Dream'

Celebrating the life and music of The Grateful Dead's Jerry Garcia! In our Seventh year on this event, this year we have:

Must Be Jelly

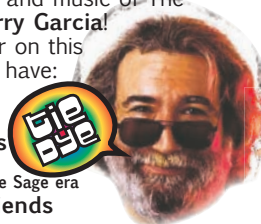
Not Tuna

Kid Red & Friends

covering Jerry's

New Riders of the Purple Sage era

Steve Arvey & Friends



QUARTERLY NEWSLETTER • VOLUME 10 NUMBER 2
SPRING/SUMMER 2015

Soundwaves

wslr-lp96.5fm

IN THIS ISSUE

Climate Change)))))))cover

Volunteer Profile)))))))cover

Chair's Corner)))))))page 2

Volunteer/Programmer

Profiles)))))))page 3

WSLR Events Calendar))))page 4

Programming Schedule))))page 5

Making Waves))))page 6

Religious Tolerance))))page 7

WSLR, Inc
WSLR-LPFM 96.5
P.O. Box 2540
Sarasota, FL 34230

NON-PROFIT
ORGANIZATION
U.S. POSTAGE PAID
MANASOTA, FL
Permit No. 1135

mailing label here

WE NEED YOU!

Ever thought about being a deejay? Playing your favorite music for an appreciative audience? Or creating a news show that deals with hard-hitting topics affecting your community? Then WSLR may be just the place for you.

WSLR is looking for energetic new programmers to fill a number of spots in our roster. You don't need a special college degree, you don't have to "know someone" to be considered, and we don't require previous radio or broadcast experience. We need people from this community who are willing to be more than passive listeners, but active participants.

If you think you have an idea for a show, whether music or public affairs, we'd like to ask you to take a week or two to listen to our various offerings. Once you are familiar with the community radio format, go online at WSLR.org and fill out an application. On our WSLR.org homepage, you will see red buttons at the top- click the red VOLUNTEER button, and select Program Application. You are just a few simple questions away from becoming a programmer.

Our programming committee will review your application and talk with you about your goals, and how you would like to fit into our WSLR community. We might ask you to come in, meet us, and do a few hours of volunteer service to get to know us better. At that point, we may bring you in to do a demo for review. It's a fairly simple process. Members of our station will train you in the studio and make sure you feel comfortable in your new surroundings. We'd love to hear from you!

Remember, we are a volunteer-funded, volunteer-driven community radio station.

People Power WSLR's Spring Membership Drive

Thank you to everyone that contributed, donated items and volunteered to our Spring Membership Drive, our 10th year. We had 412 unique contributions as of April 22nd. At the end of the week we fell 10% short of our goal of \$33,000. \$29,500 is still a success. We hope to make this up with pledges that come in in the next couple of weeks.

Special thanks this year to **Nan Rush** for all her hard work in processing pledges and updating our member database; **Patty Kinder** for taking responsibility for mailing thank you gifts and doing pledge drive follow-up; **Chris Weiss** for scheduling volunteers for the fund drive; and **Dadee-o** for putting in the most volunteer shifts and for keeping us well-supplied with donuts.

Special thanks also to the restaurants that fed our volunteers for the week - Carr's Corner Cafe, Nancy's Bar-B-Q, Old Packinghouse Cafe, Tsunami Sushi and Hibachi Grill, Cafe in the Park, Charlie's Steak and Hoagies, Panera Bread, and the Four Winds Cafe at New College. And special thanks to all of you that called in to support your favorite shows. It means so much

to our programmers to know that the time and energy they put into their shows is appreciated.

If you are receiving this newsletter in the mail and haven't renewed your membership with the station in the past year, we will be culling our newsletter list this month. If you would like to continue receiving the newsletter, please complete the Membership form in the newsletter and mail it back with your contribution. And don't forget our **Phase II Solar Campaign**. Our board will match 2 for 1 any donation to get additional sun harnessed for WSLR.

Community radio in Sarasota could not exist without **your support**. Thank you for believing in us and keeping us on the air for 10 years.

**Be kind. Be connected.
Be unafraid.**